

## Subplates and Mounting Bolt Kits

Also refer to "Directional Valve Features, Selection and Operating Recommendations" ([dynexdcvoperating.pdf](#))

### CONTACT INFORMATION

#### USA Headquarters

Dynex/Rivett Inc.  
770 Capitol Drive  
Pewaukee, WI 53072 U.S.A.  
Tel: 262-691-2222  
FAX: 262-691-0312  
E-mail: [sales@dynexhydraulics.com](mailto:sales@dynexhydraulics.com)

#### Power Units & Systems

Dynex/Rivett Inc.  
54 Nickerson Road  
Ashland, MA 01721 U.S.A.  
Tel: 508-881-5110  
FAX: 508-881-6849  
E-mail: [ashland@dynexhydraulics.com](mailto:ashland@dynexhydraulics.com)

#### European Sales

Dynex/Rivett Inc.  
Unit C5 Steel Close, Little End Road, Eaton Socon,  
Huntingdon, Cambs. PE19 8TT United Kingdom  
Tel: +44 (0) 1480 213980  
FAX: +44 (0) 1480 405662  
E-mail: [sales@dynexhydraulics.co.uk](mailto:sales@dynexhydraulics.co.uk)

**For more information  
visit our web site:  
[www.dynexhydraulics.com](http://www.dynexhydraulics.com)**

#### BROCHURE NOTES:

*Consult the Dynex sales department for a review of any application which requires operating above the rated flows or pressures, or higher than normal operating temperatures.*

*Specifications shown were in effect when published. Since errors or omissions are possible, contact your sales representative for the most current specifications before ordering. Dynex reserves the right to discontinue or change designs at any time without incurring any obligation.*



## Subplates and Mounting Bolt Kits

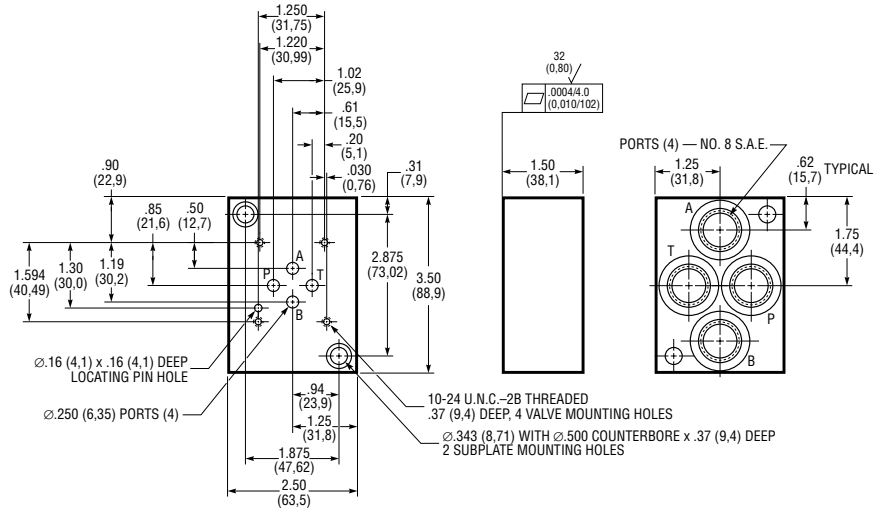
### SUBPLATES

This section includes dimensions for subplates used with directional valves.

Valve mounting bolts are supplied when ordering subplates. When ordering valves and subplates together, valves are not mounted on subplates.

### VALVE MOUNTING

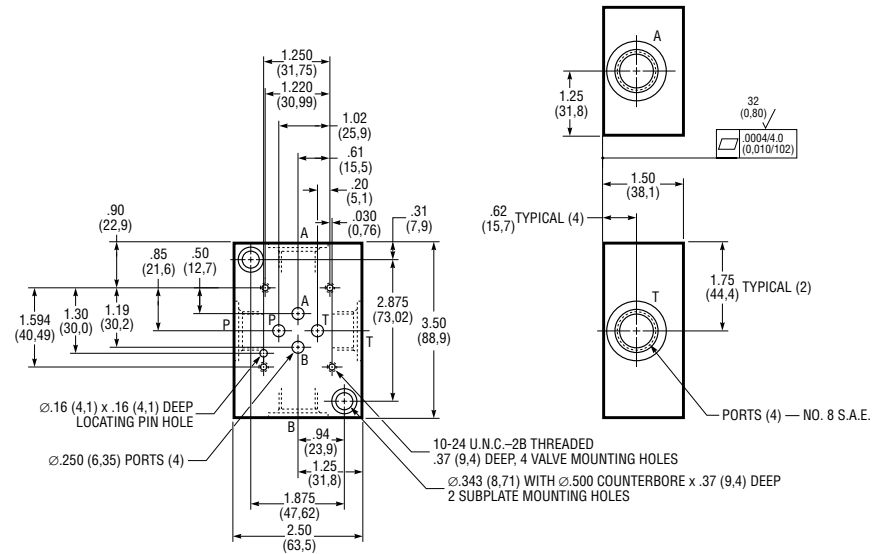
Mounting bolts are not included when ordering valves alone. The table adjoining each group of subplate drawings indicates mounting kits that are available.



Subplate P27-D03-8

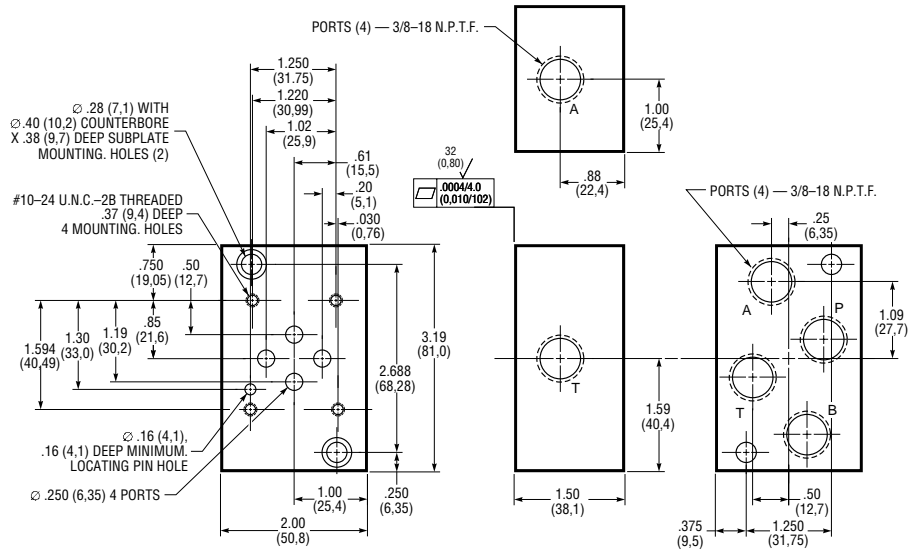
### D03 PATTERN

Item: Part Number	Description
Subplates: P27-D03-8	Bottom, No. 8 S.A.E.
PS027-D03-8	Side, No. 8 S.A.E.
P25-3/8	Universal, 3/8 inch N.P.T.F.
Bolt Kit: P25-BK-12	Four 10-24 U.N.C. Threaded x 0.75 inches (19,1 mm)
Spacer Plate:	For mounting "EPW" models on KV00301065 side-ported subplate/manifolds.
Bolt Kit: B25-BK-24	For use with above spacer: Four 10-24 U.N.C. Threaded x 1.50 inches (38,1 mm)
Adapter Plate: 85-2239	For mounting D03-10 Design on 01-42 Design mounting surface.



Subplate PSO27-D03-8

# SUBPLATES

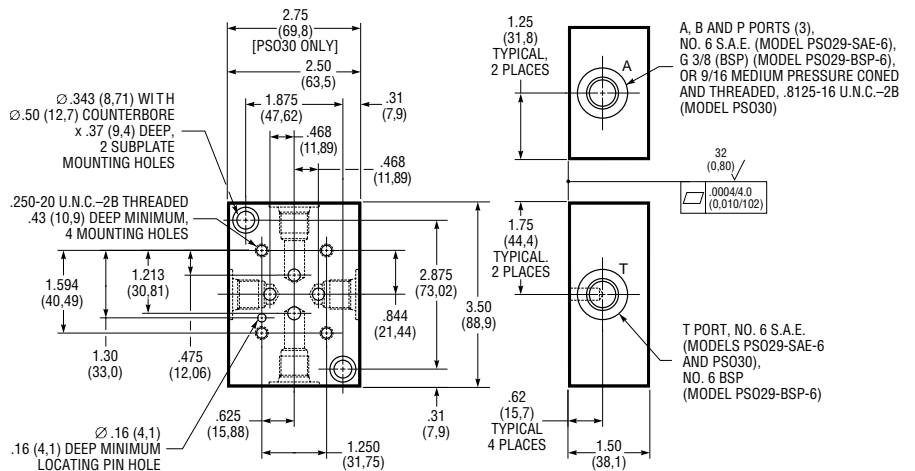


Subplate P25-3/8

## SPECIAL HP03 PATTERN

Item: Part Number	Description
Subplates: PSO29-SAE-6	Side Ports, No. 6 S.A.E.
PSO29-BSP-6	Side Ports, G 3/8 (BSP)
PSO30	Side Ports, 9/16 Medium Pressure Coned and Threaded, .8125-16 U.N.-2B Threaded <sup>①</sup>
Bolt Kit: P11-BK	Four .250-20 U.N.C. Threaded x 0.75 inches (19 mm)
Spacer Plate:	For mounting "EPW" models on 10811320 side-ported subplate or manifold.
Bolt Kit: P11-BKE	For use with above spacer: Four .250-20 U.N.C. Threaded x 1.50 inches (38 mm)

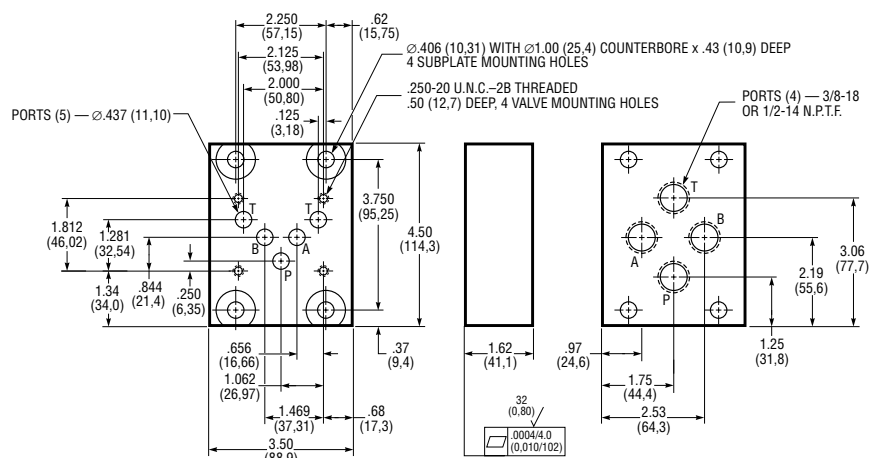
<sup>①</sup> High Pressure Coned and Threaded, used with Autoclave Medium Pressure, Butech M/P or equivalent fitting.



Subplate PSO29-SAE-6 or PSO29-BSP-6 or PSO30

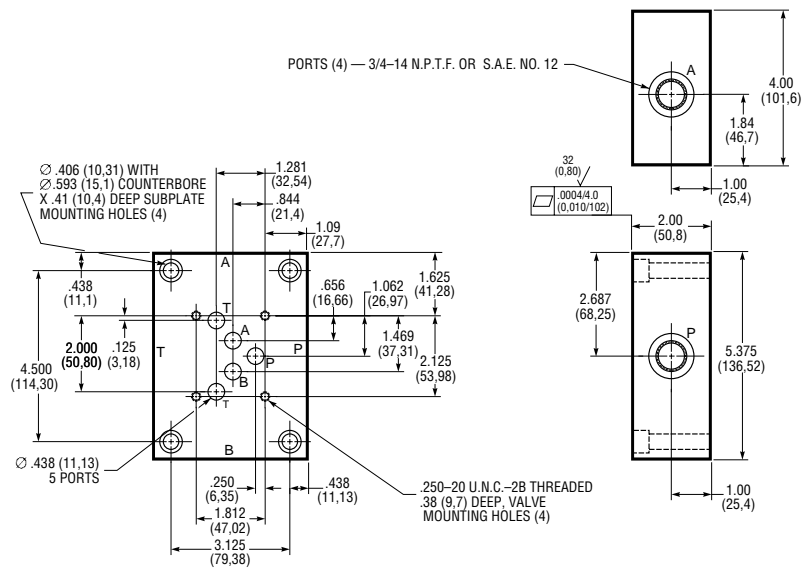
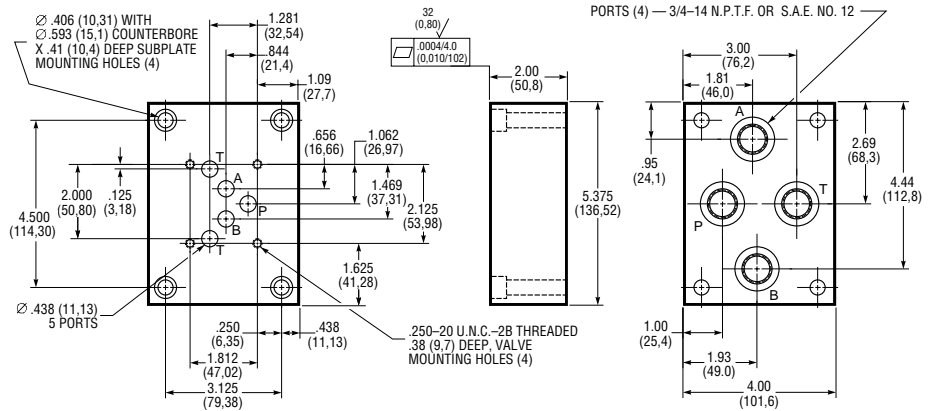
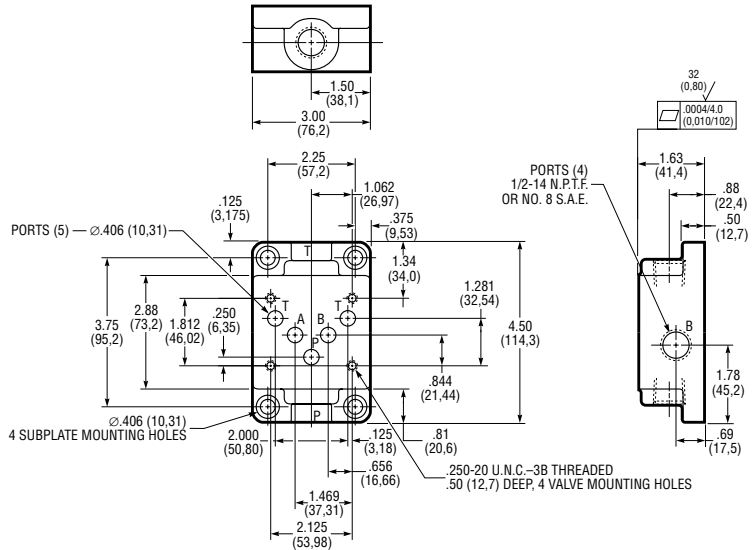
## D05 PATTERN

Item: Part Number	Description
Subplates: P23-1/2	Bottom, 1/2-14 N.P.T.F.
P28-3/4	Bottom, 3/4-14 N.P.T.F.
P28-D05-12	Bottom, No. 12 S.A.E.
PSO11-1/2	Side, 1/2-14 N.P.T.F.
PSO28-3/4	Side, 3/4-14 N.P.T.F.
PSO11-D05-8	Side No. 8 S.A.E.
PSO28-D05-12	Side No. 12 S.A.E.
Bolt Kit: P22-BK	Four .250-20 U.N.C. Threaded x 1.00 inch (25.4 mm)
Spacer Kit: 213367	For mounting "EPW" models on side-ported subplate or manifold
Bolt Kit: P22-BK-32	For use with above spacer: (4) .250-20 U.N.C. Threaded x 2.00 inches (50.8 mm)



Subplate P23-1/2

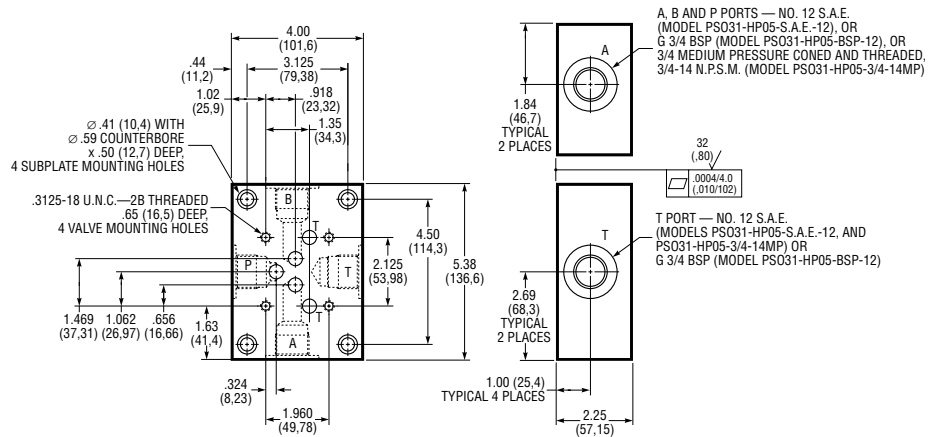
# SUBPLATES



# SUBPLATES

## SPECIAL HP05 PATTERN

Item Part Number	Description
Subplate: PS031-SAE-12	Side Ports, S.A.E. No. 12
Subplate: PS031-BSP-12	Side Ports, G 3/4 (BSP) <sup>①</sup>
Subplate: PS031-3/4-14MP	Side Ports, 3/4 Medium Pressure Coned and Threaded, 3/4-14 N.P.S.M. <sup>②</sup>
Bolt Kit: P31-BK-16	Four .3125-18 U.N.C. Threaded x 1.00 inch (25,4 mm)
Spacer Kit: 10921320	For mounting "EPW" models on PSO subplate or manifold.
Bolt Kit: P31-BK-32	For use with above spacer: Four .3125-18 U.N.C. Threaded x 2.00 inches (50,8 mm)

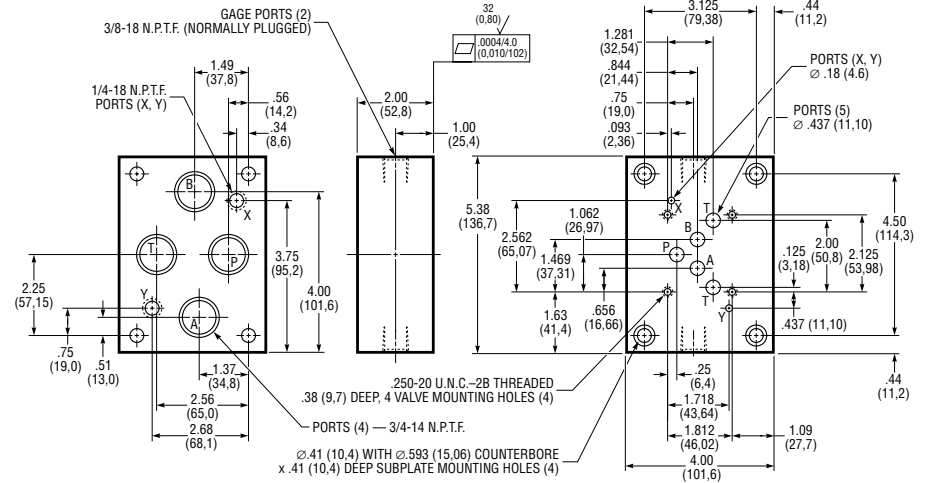


Subplate PS031-SAE-12 or PS031-BSP-12 or PS031-3/4-14MP

- ① Port fits British Standard Pipe fitting.
- ② High pressure port used with Autoclave Medium Pressure, Butech M/P or equivalent fitting.

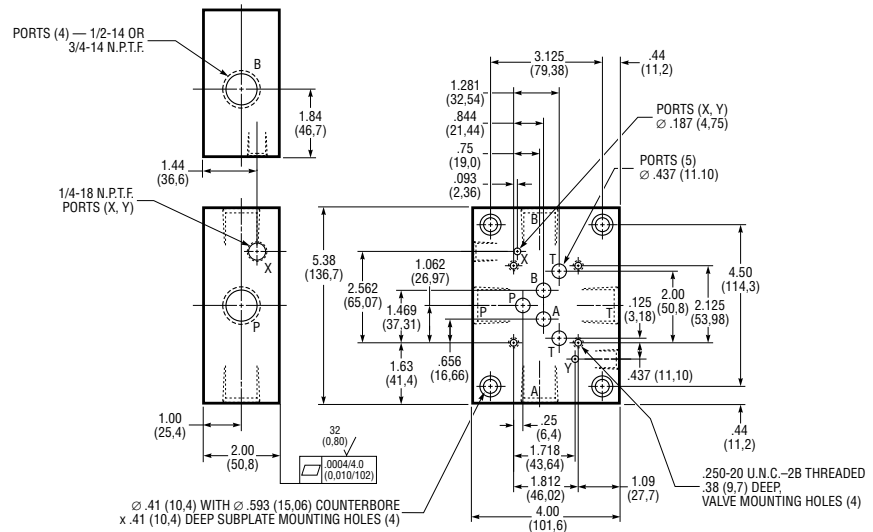
## D05H SIZE (D05 PATTERN)<sup>①</sup>

Item (Part Number)	Description
P22-3/4	Bottom, 3/4-14 N.P.T.F.
PSO22-3/4	Side, 3/4-14 N.P.T.F.
Bolt Kit (P22-BK)	(4) .250-20 U.N.C. Threaded x 1.00 Inches (25,4 mm)



Subplate P22-3/4

- ① D05 pattern with auxiliary "X" and "Y" ports and standard second "T" port.

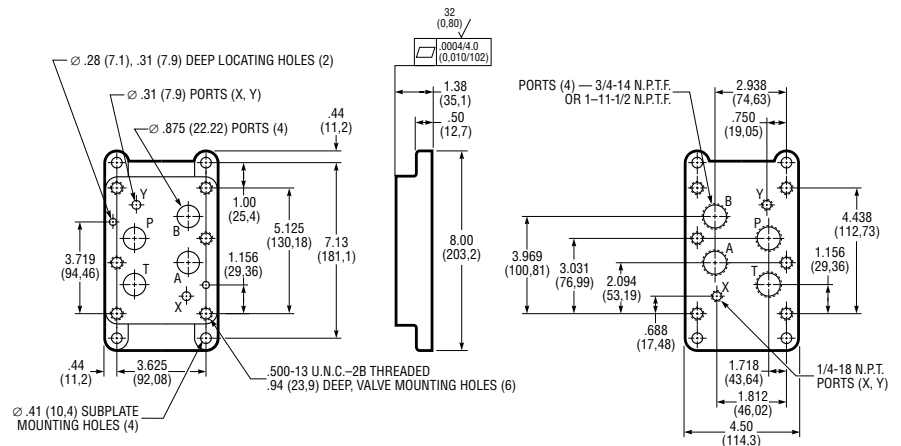


Subplate PSO22-3/4

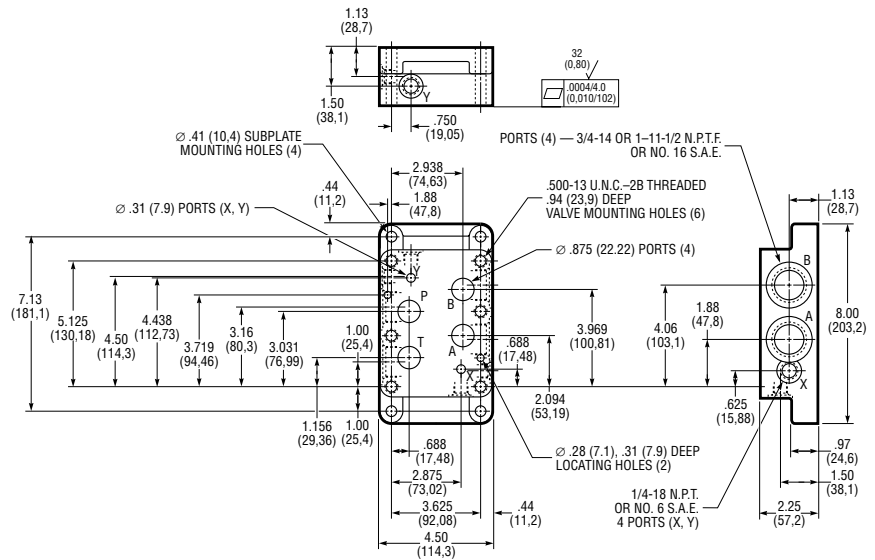
# SUBPLATES

## D08 PATTERN

Item: Part Number	Description
Subplates:	
P16-3/4	Bottom Ports, 3/4-14 N.P.T.F.
P16-1	Bottom Ports, 1-11/2 N.P.T.F.
PSO16-3/4	Side Ports, 3/4-14 N.P.T.F.
PSO16-1	Side Ports, 1-11/2 N.P.T.F.
PSO16-D08-16	Side Ports, S.A.E. No. 16
Bolt Kit:	Six .500-13 U.N.C. Threaded x 1.25 inches (31,8 mm)
P16-BK-20	



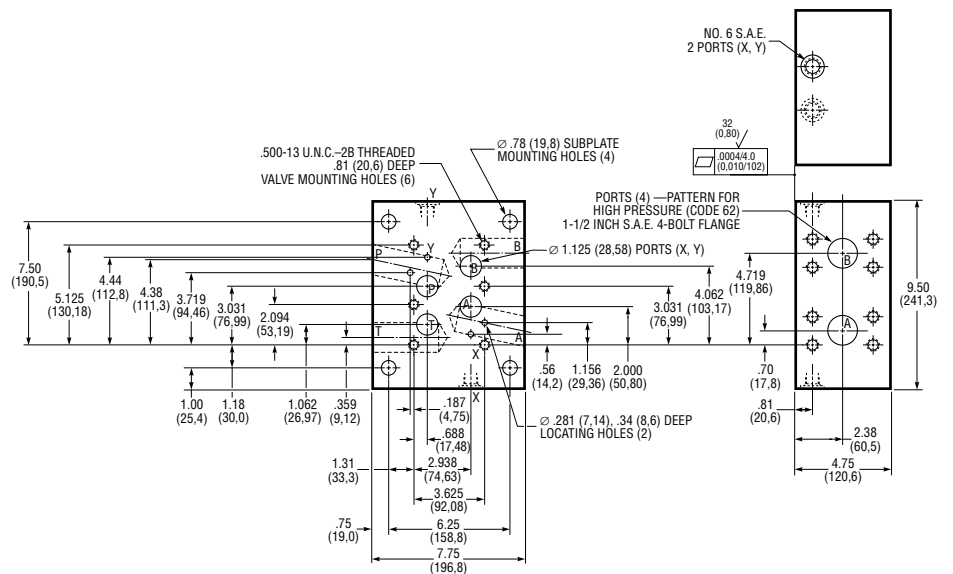
Subplate P16-3/4 or P16-1



Subplate PSO16-3/4, PSO16-1 or PSO-D08-16

## D08H SIZE

Item: Part Number	Description
Subplate:	Side Ports, Pattern for S.A.E. 1-1/2 inch Flange (Code 62)
PSO24-F-1-1/2	
Bolt Kit:	Six .500-14 U.N.C. Threaded x 1.50 inches (38,1 mm)
P24-BK	



Subplate PSO24-F-1-1/2